

ACS — A Major Breakthrough In Heating Safety

Anti-Creo-Soot (ACS) is a non-toxic and environmentally safe liquid manganese catalyst that attacks and destroys dangerous creosote and soot. It is safe for use in all wood, coal, and pellet burning appliances including those with catalytic combustors.

Safe For Use With: Wood, Coal & Pellet Burning Appliances, As Well As Gas Logs

Wood: Regular use of ACS converts hazardous creosote to a harmless ash or char. Helps reduce further deposits, making the appliance safer to operate and more efficient.

Coal: Soot from low grade or improperly burned coal is a serious pollutant. ACS can significantly reduce soot and, therefore, emissions from coal stoves.

Pellet Stoves: ACS reduces accumulations of excess ash from wood-based pellets, and helps prevent clogging of the pellet feed mechanism.

Gas Logs: ACS disperses unsightly carbon buildup on gas logs and helps prevent future accumulation. The result is cleaner burning logs and a more realistic fire.

©2007 SaverSystems

Make Your Chimney Safer With... **ANTI-CREO-SOOT**

If you burn wood you may have a hidden fire hazard in your chimney—CREOSOTE! Creosote is a black, tar-like substance caused by condensation of gases in smoke. In time it builds up, and under the right conditions, it can ignite into a dangerous chimney fire. Glazed creosote is the worst type because it is almost impossible to remove with conventional cleaning methods.

Use ACS regularly to control creosote accumulation and reduce pollution. Start early in the heating season to "condition" stoves and furnaces for efficiency.

Use liberally at the end of the heating season, before shutting down stove or furnace etc. to reduce "off season" odors and chimney corrosion.

For Fastest Results...

Use New ACS Powder
Between Fires



And Liquid ACS
While Burning



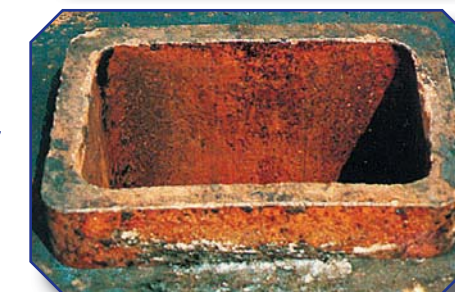
A severe glazed creosote condition in a clay flue liner.



A clay liner during treatment with ACS. (Creosote is being converted.)



A clay liner after ACS treatment and chimney sweeping.



Have your chimney cleaned and inspected regularly by a Professional Chimney Sweep.